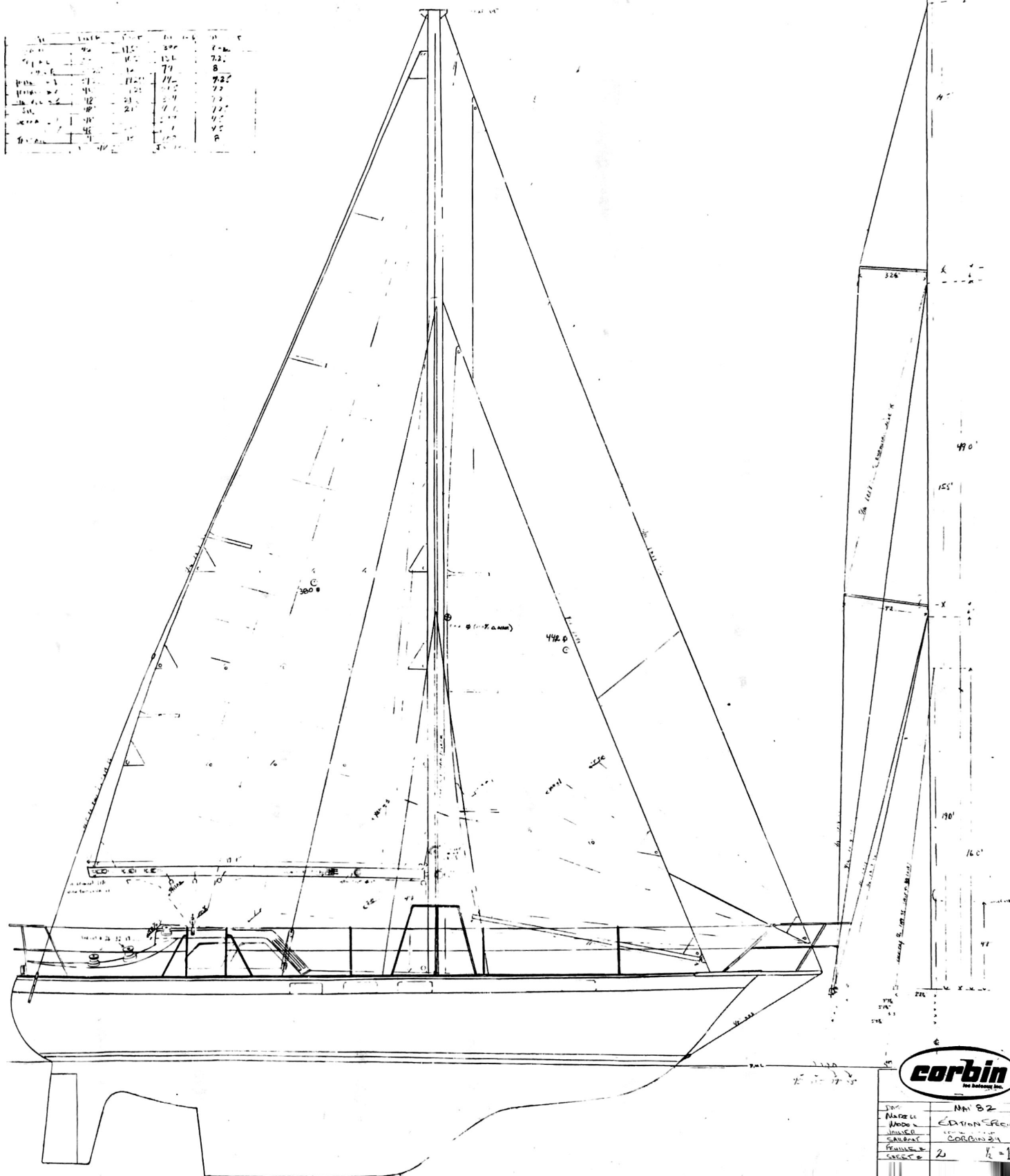


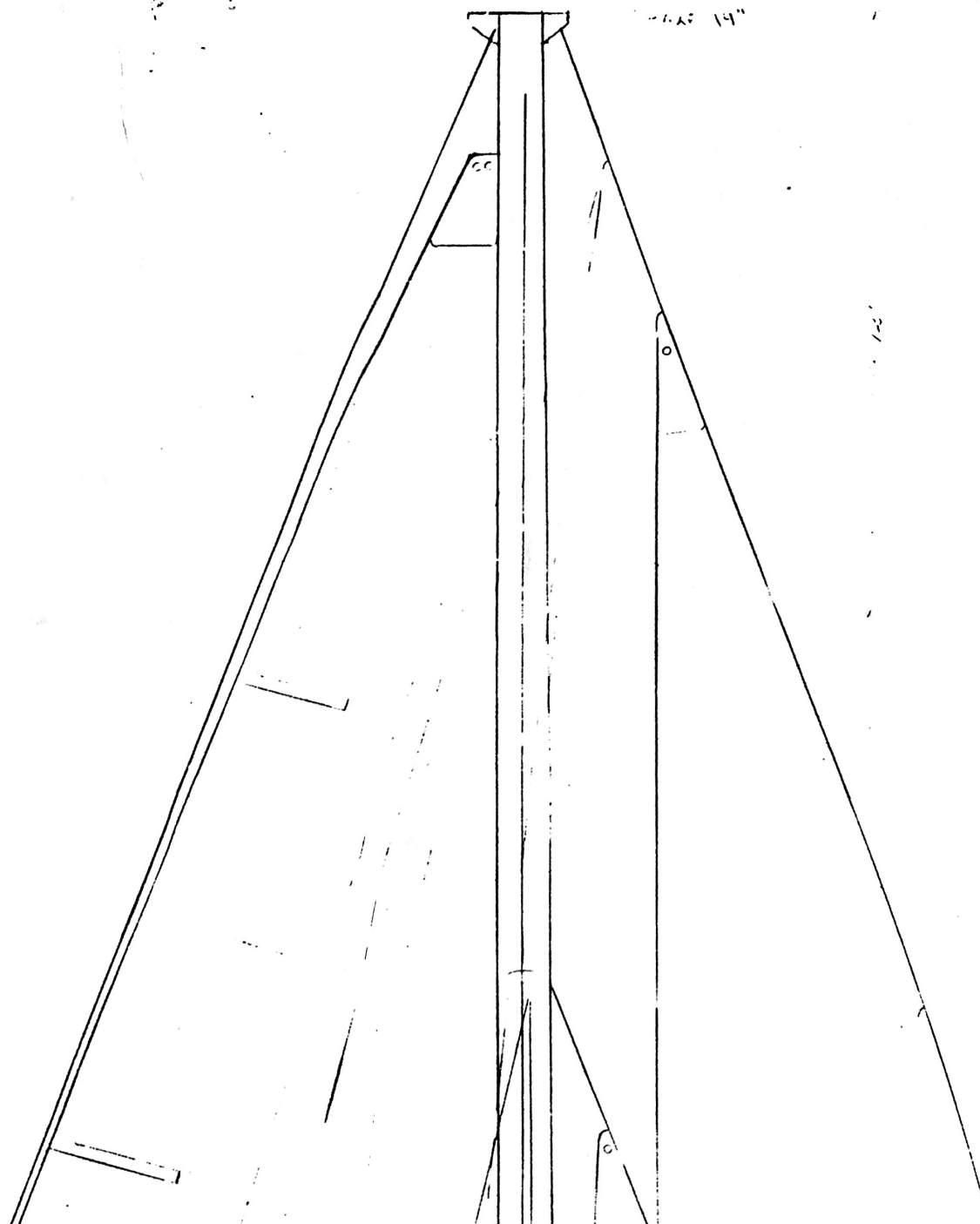
1	11.5	11.5	11.5	11.5
2	11.5	11.5	11.5	11.5
3	11.5	11.5	11.5	11.5
4	11.5	11.5	11.5	11.5
5	11.5	11.5	11.5	11.5
6	11.5	11.5	11.5	11.5
7	11.5	11.5	11.5	11.5
8	11.5	11.5	11.5	11.5
9	11.5	11.5	11.5	11.5
10	11.5	11.5	11.5	11.5
11	11.5	11.5	11.5	11.5
12	11.5	11.5	11.5	11.5
13	11.5	11.5	11.5	11.5
14	11.5	11.5	11.5	11.5
15	11.5	11.5	11.5	11.5
16	11.5	11.5	11.5	11.5
17	11.5	11.5	11.5	11.5
18	11.5	11.5	11.5	11.5
19	11.5	11.5	11.5	11.5
20	11.5	11.5	11.5	11.5
21	11.5	11.5	11.5	11.5
22	11.5	11.5	11.5	11.5
23	11.5	11.5	11.5	11.5
24	11.5	11.5	11.5	11.5
25	11.5	11.5	11.5	11.5
26	11.5	11.5	11.5	11.5
27	11.5	11.5	11.5	11.5
28	11.5	11.5	11.5	11.5
29	11.5	11.5	11.5	11.5
30	11.5	11.5	11.5	11.5
31	11.5	11.5	11.5	11.5
32	11.5	11.5	11.5	11.5
33	11.5	11.5	11.5	11.5
34	11.5	11.5	11.5	11.5
35	11.5	11.5	11.5	11.5
36	11.5	11.5	11.5	11.5
37	11.5	11.5	11.5	11.5
38	11.5	11.5	11.5	11.5
39	11.5	11.5	11.5	11.5
40	11.5	11.5	11.5	11.5
41	11.5	11.5	11.5	11.5
42	11.5	11.5	11.5	11.5
43	11.5	11.5	11.5	11.5
44	11.5	11.5	11.5	11.5
45	11.5	11.5	11.5	11.5
46	11.5	11.5	11.5	11.5
47	11.5	11.5	11.5	11.5
48	11.5	11.5	11.5	11.5
49	11.5	11.5	11.5	11.5
50	11.5	11.5	11.5	11.5

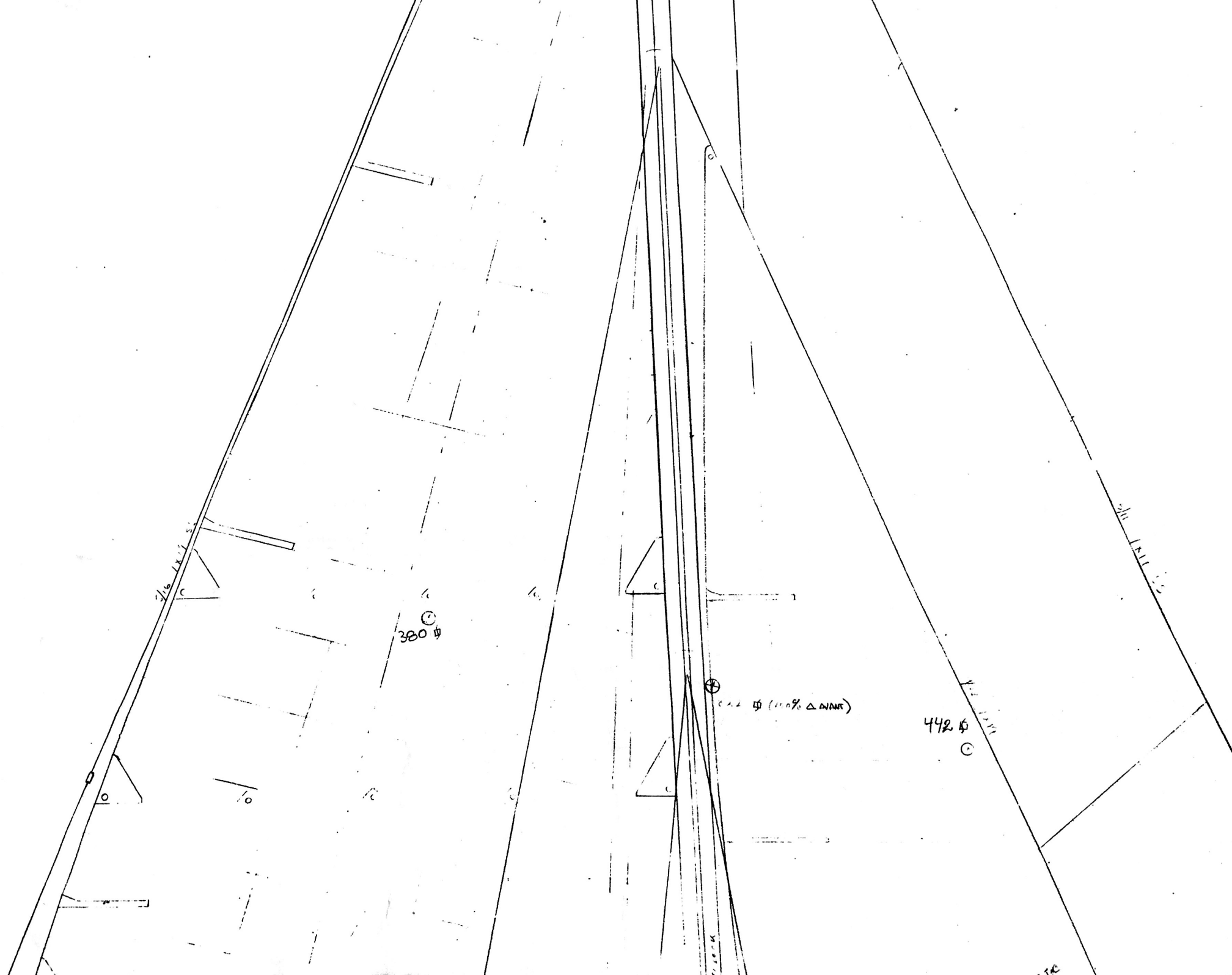


NO.	111182
NAME	EDITION SPECIALE
MODELE	CORBIN 24
PROJETE	CORBIN 24
REVISION	2
DATE	1/2/81

DATE	LUFF	FOOT	AMOUNT	UNIT
1940	42'	17.5'	380	8-2
1941	35'	10.5'	186	7.25
1942	25.25'	12'	79	8
1943	31.25'	14.25'	142	7.25
1944	46'	17.25'	265	7.25
1945	48'	21.25'	304	7.25
1946	48'	21'	416	7.25
1947	48'		517	4.5
1948	48'		401	4.5
1949	51'	15'	108	8
	$\Sigma = 425'$		$\Sigma = 1800$	

1-5	5.0
2	8.02
3	7.25
4	8
5	7.25
6	7.25
7	4.5
8	4.5
9	8
10	





PLOT TO TOWER 1/18/55

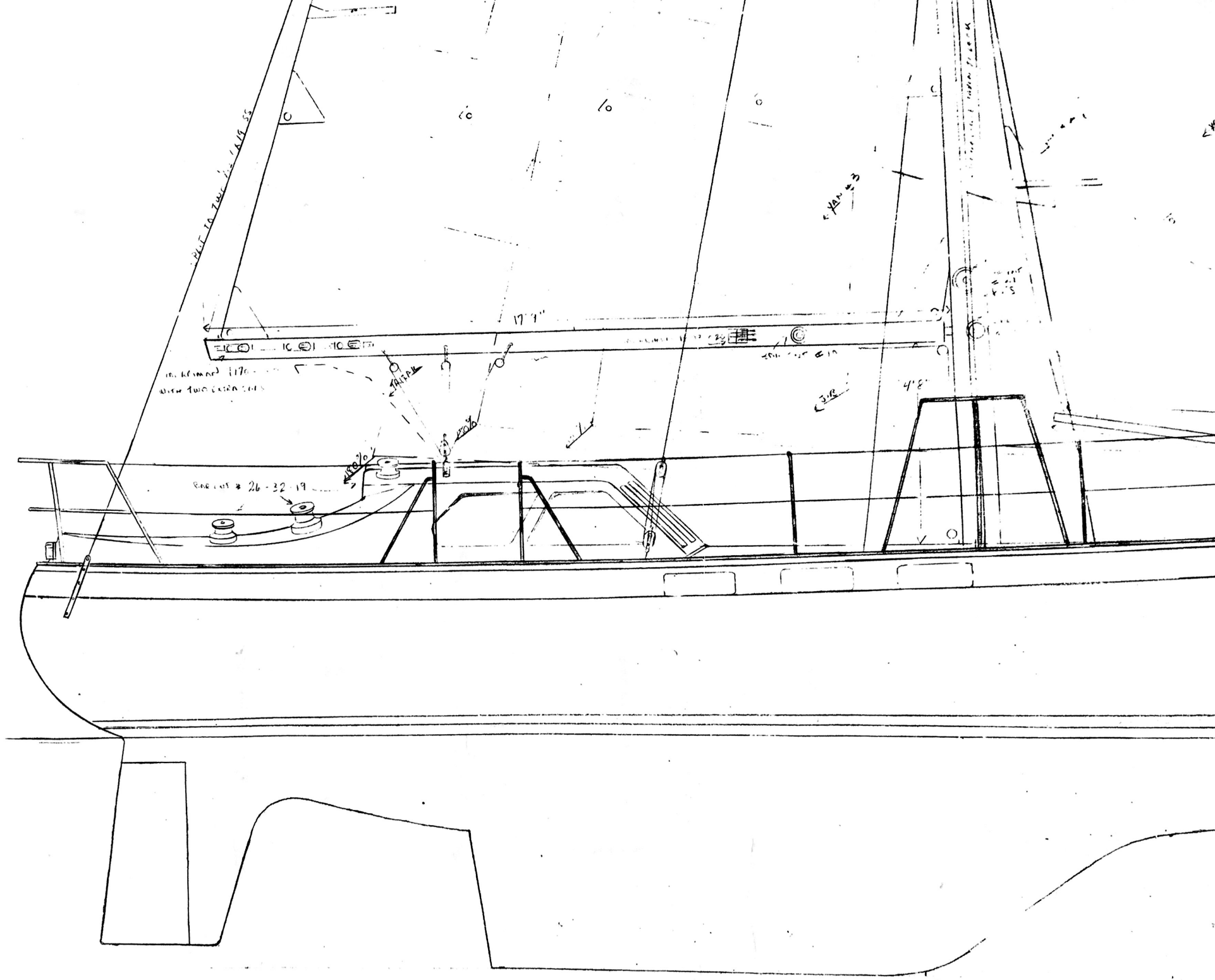
1/18 1817 55

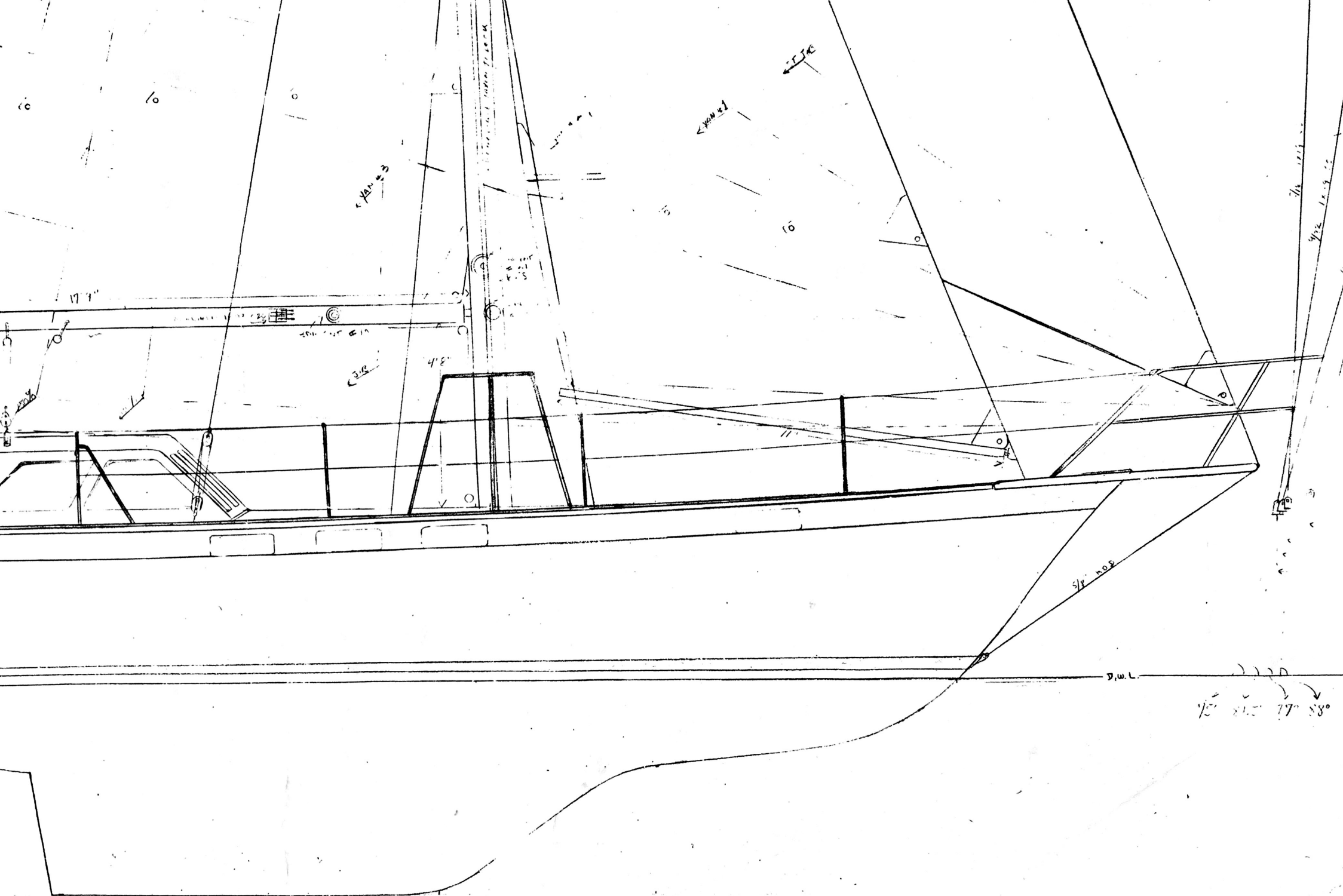
380

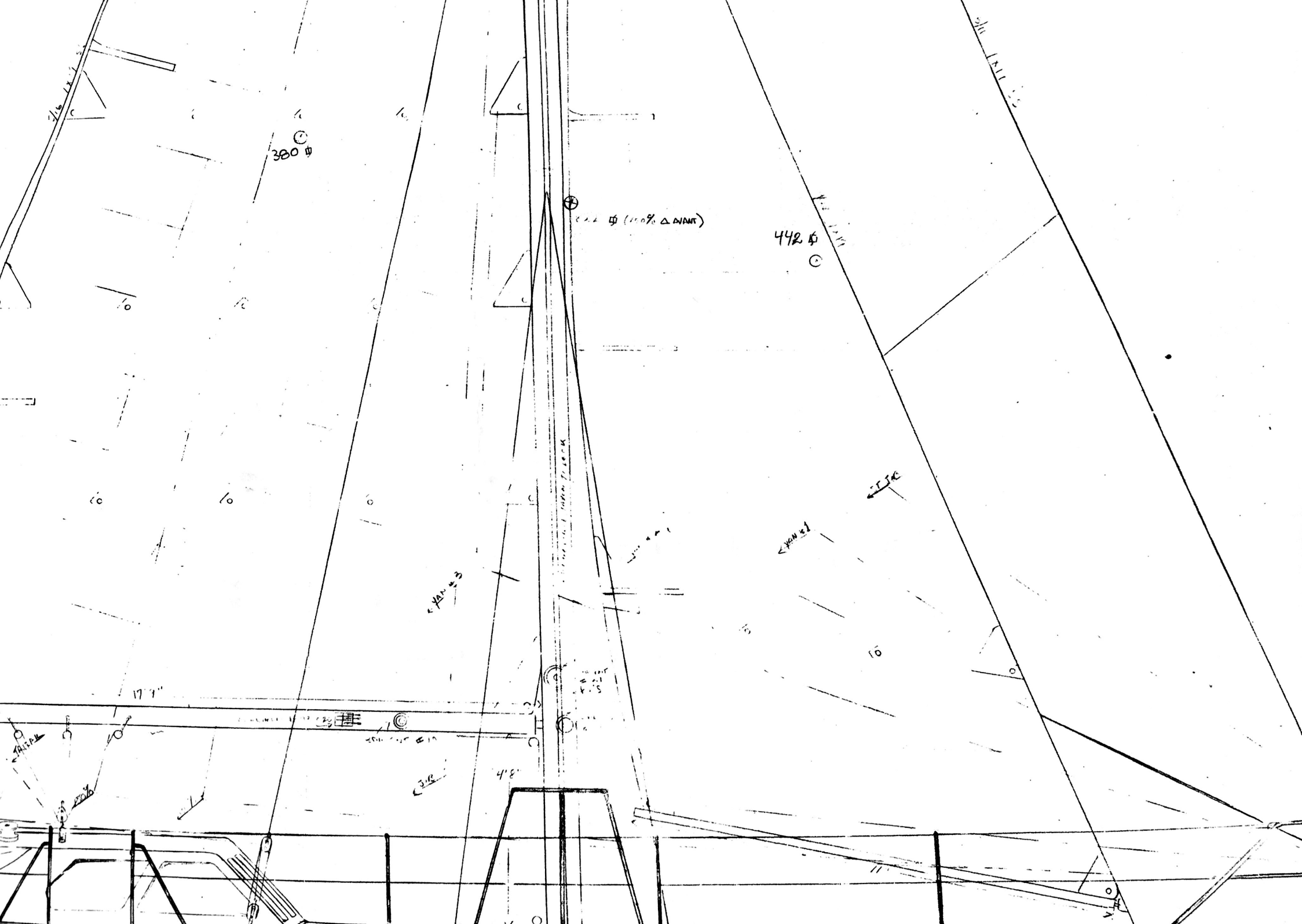
1/18/55

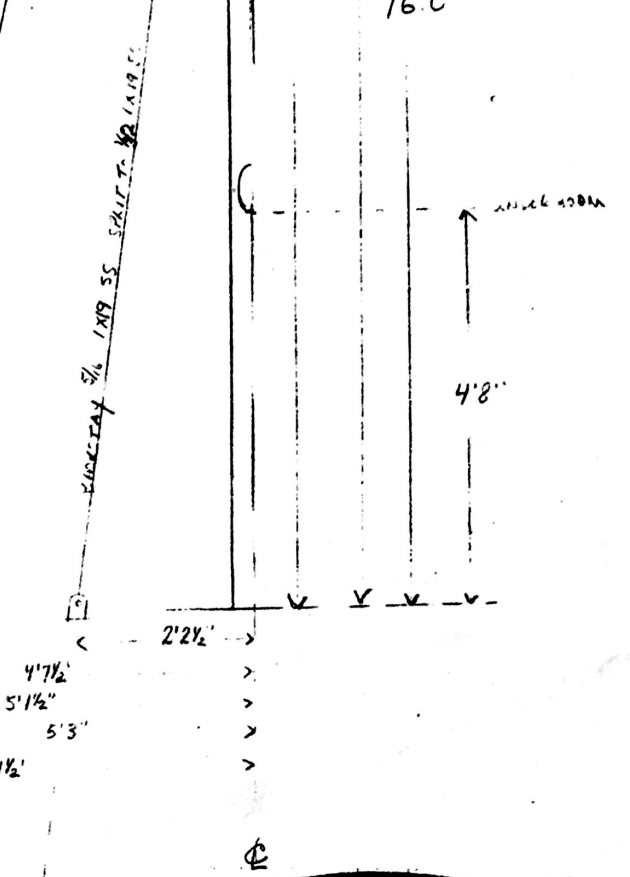
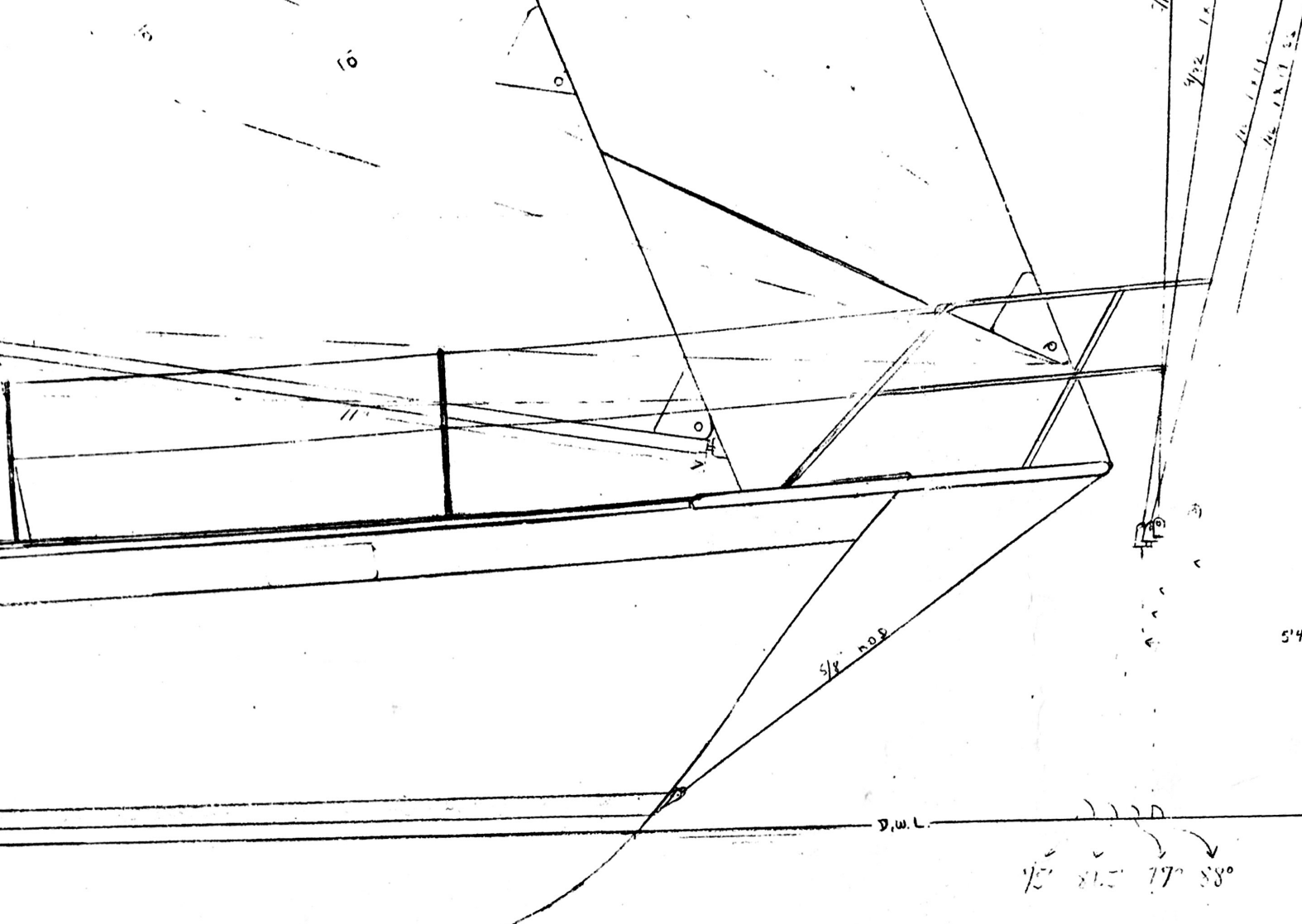
GENERAL TOWER TRACK











75° 81° 77° 88°

DATE	MAY 82
MARQUE	ÉDITION SPECIALE
MODEL	ÉDITION SPECIALE
UNILIER	ÉDITION SPECIALE
SAILBOAT	CORBIN 39
FEUILLE #	2
SHEET #	1/2" = 1'
PAR	
P.Y.	MARINS CORBIN

(1.0% Δ VANT)

442.4
C

← 1000 ft

10

11

4'2"

- X

6' ↑

190'

160'

↑ 4'8" (width from)

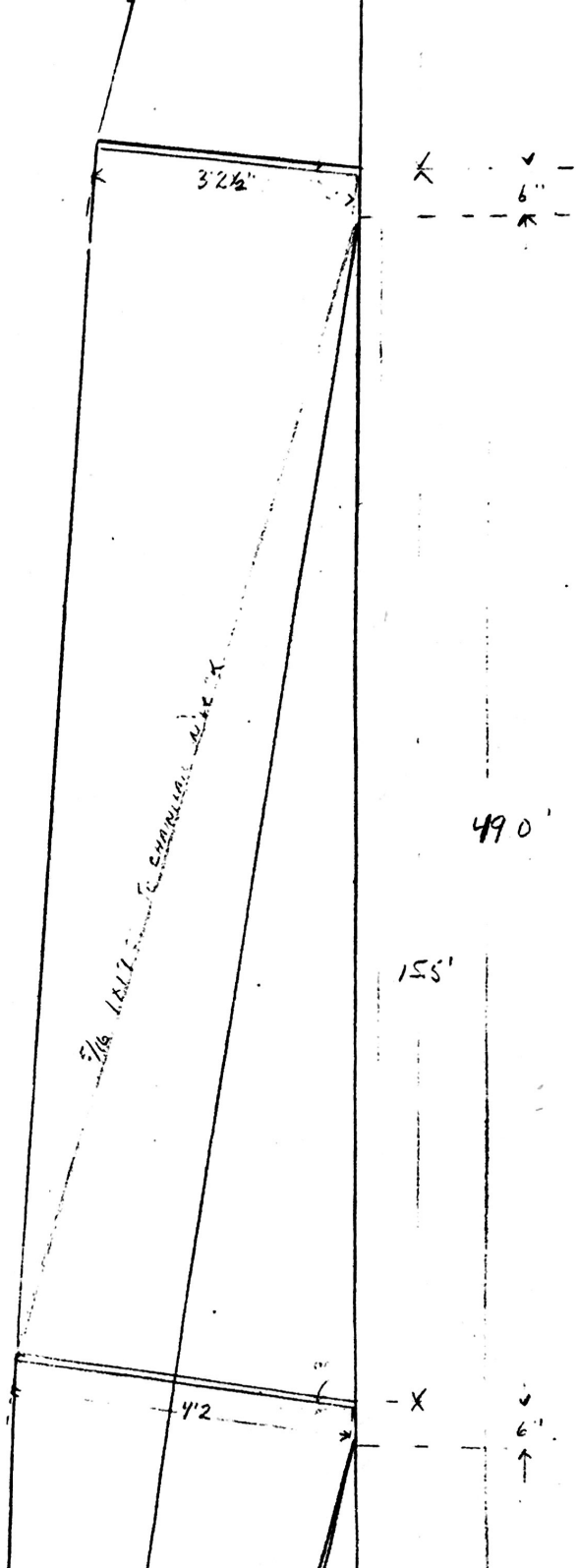
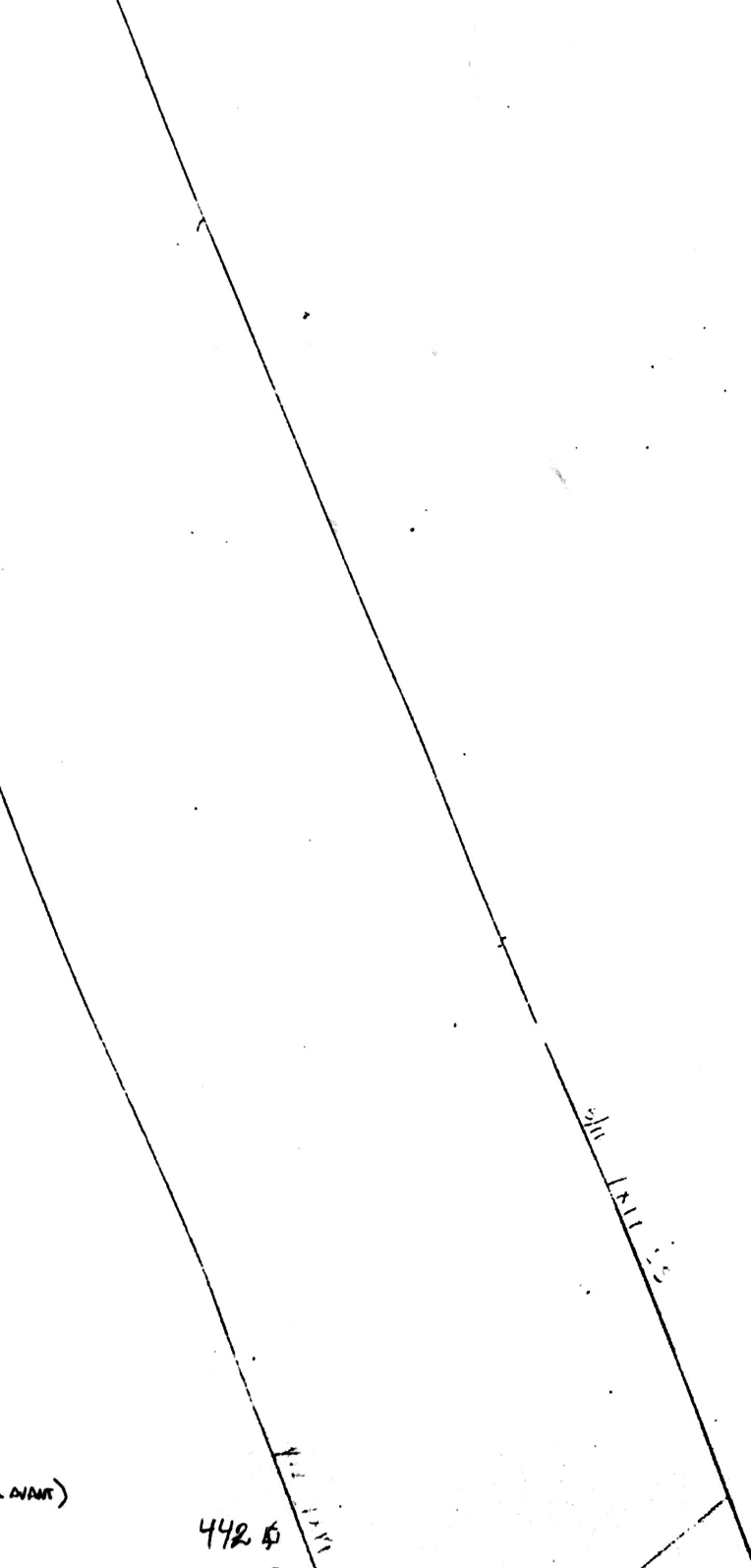
7/16 1214 SS

4/32 1419 SS

1/16 1411

7/16 1411 SS

ORIGIN 7/16 1419 SS SPLIT TO 4/32 1419 SS



490'

155'

412

6'

442'

DIAM)

5/16 1.811

5/16 1.811

