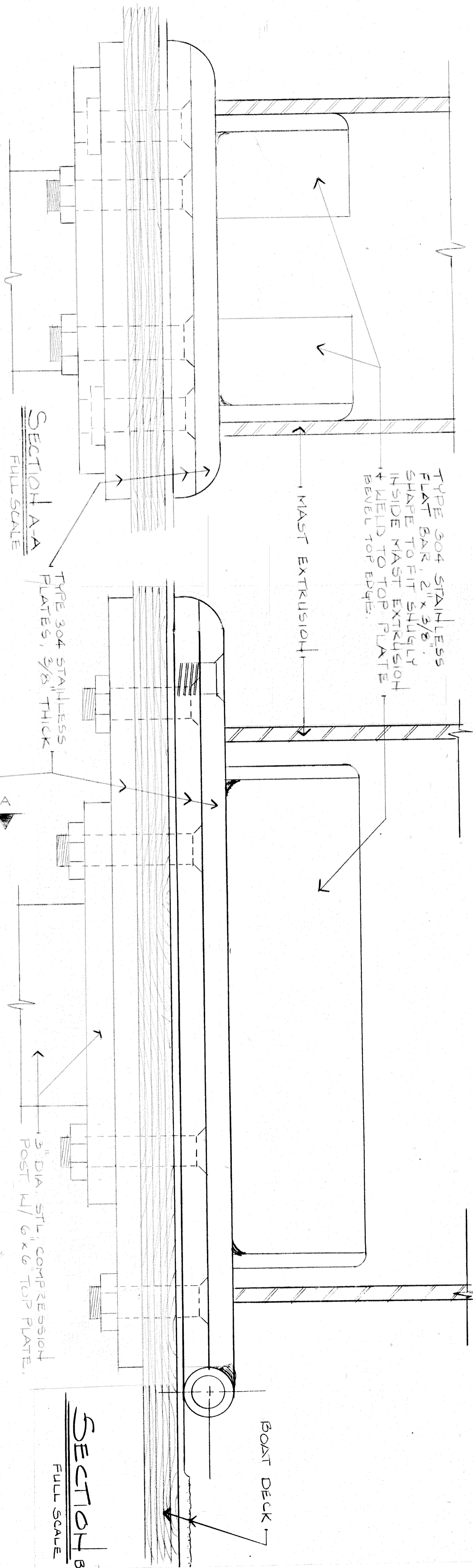


TYPE 304 STAINLESS
FLAT BAR, 2" x 3/8"
SHAPE TO FIT SNUGLY
INSIDE MAST EXTRUSION
& WELD TO TOP PLATE
BEVEL TOP EDGE.

MAST EXTRUSION



SECTION A-A
FULL SCALE

TYPE 304 STAINLESS
PLATES, 3/8" THICK

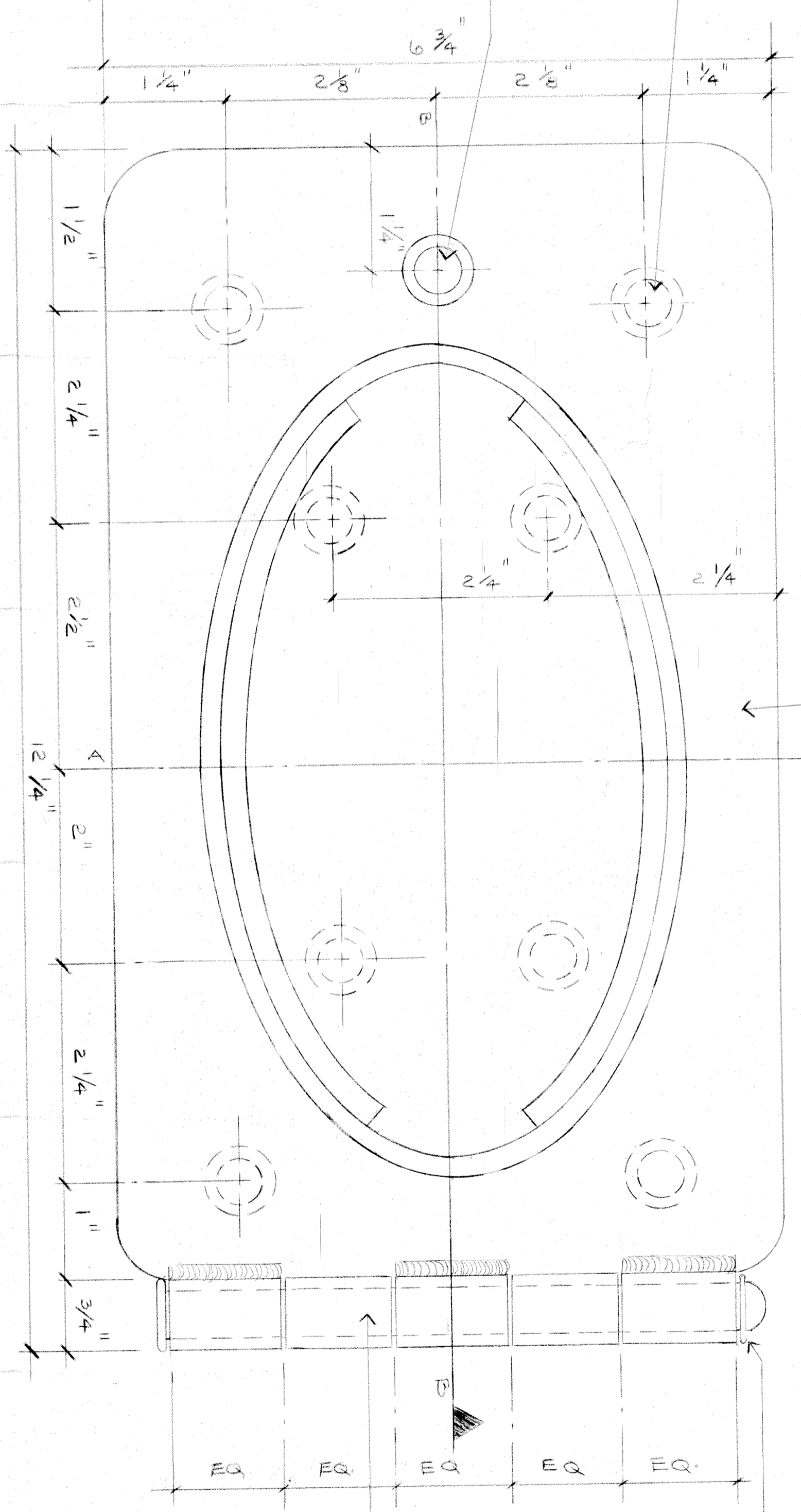
3" DIA. STL. COMPRESSION
POST W/ 6 x 6 TOP PLATE.

SECTION B-B
FULL SCALE

BOAT DECK

DRILL BOTTOM PLATE FOR
8- 3/8" DIA. FH. ST. STL.
BOLTS

DRILL BOTH PLATES FOR
1/2" DIA. FH. ST. STL. BOLT
THREAD BOTTOM PLATE
ONLY



PLAN VIEW
FULL SCALE

TYPE 304 STAINLESS
TUBING 3/4" O.D.
WELDED TO HINGE PLATES

TYPE 304 STAINLESS
1/2" DIA. SHAFT, NOTCH
ONE END TO ACCEPT
SNAP RING.